

The Sandpiper



2



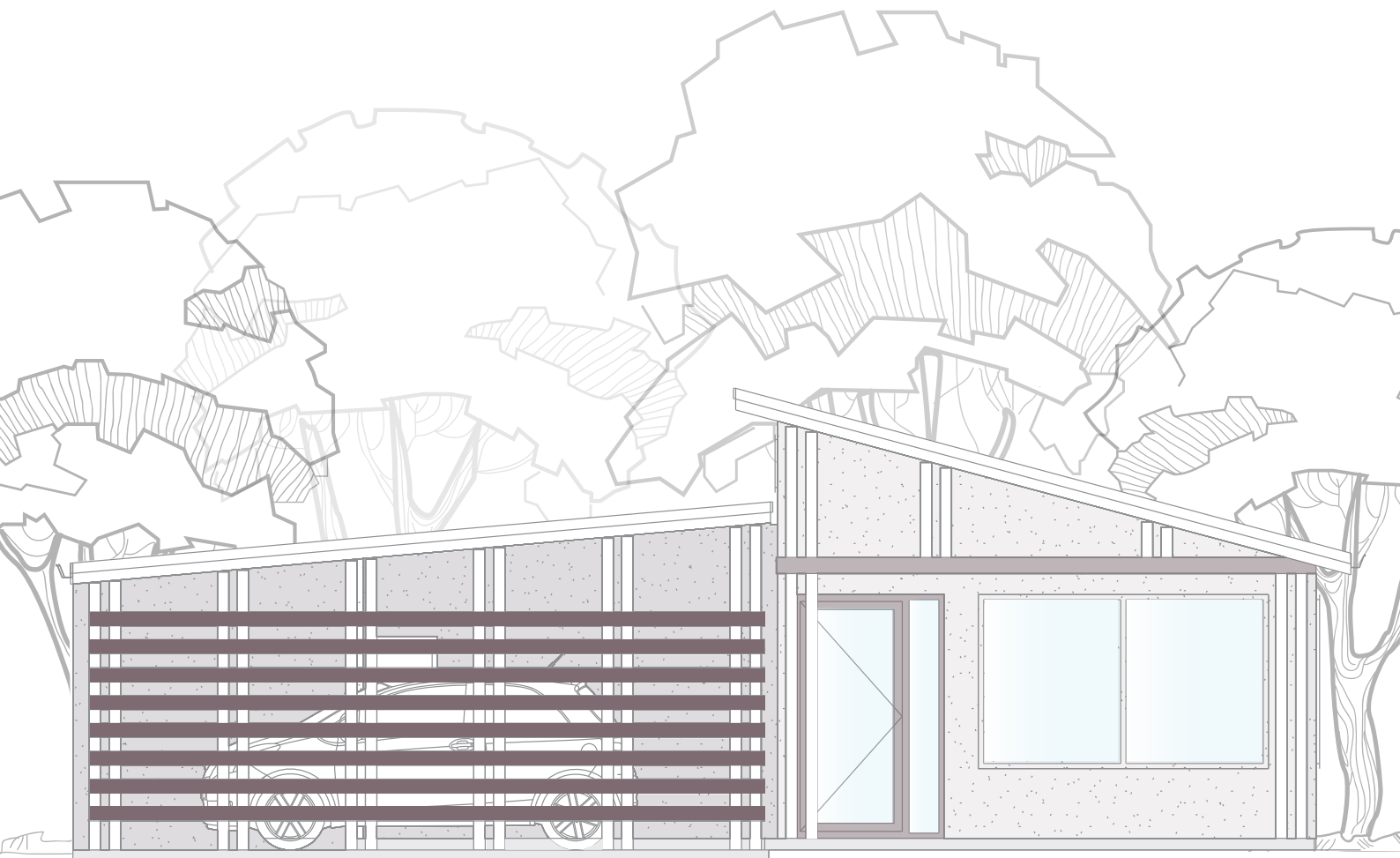
1.5



2



1

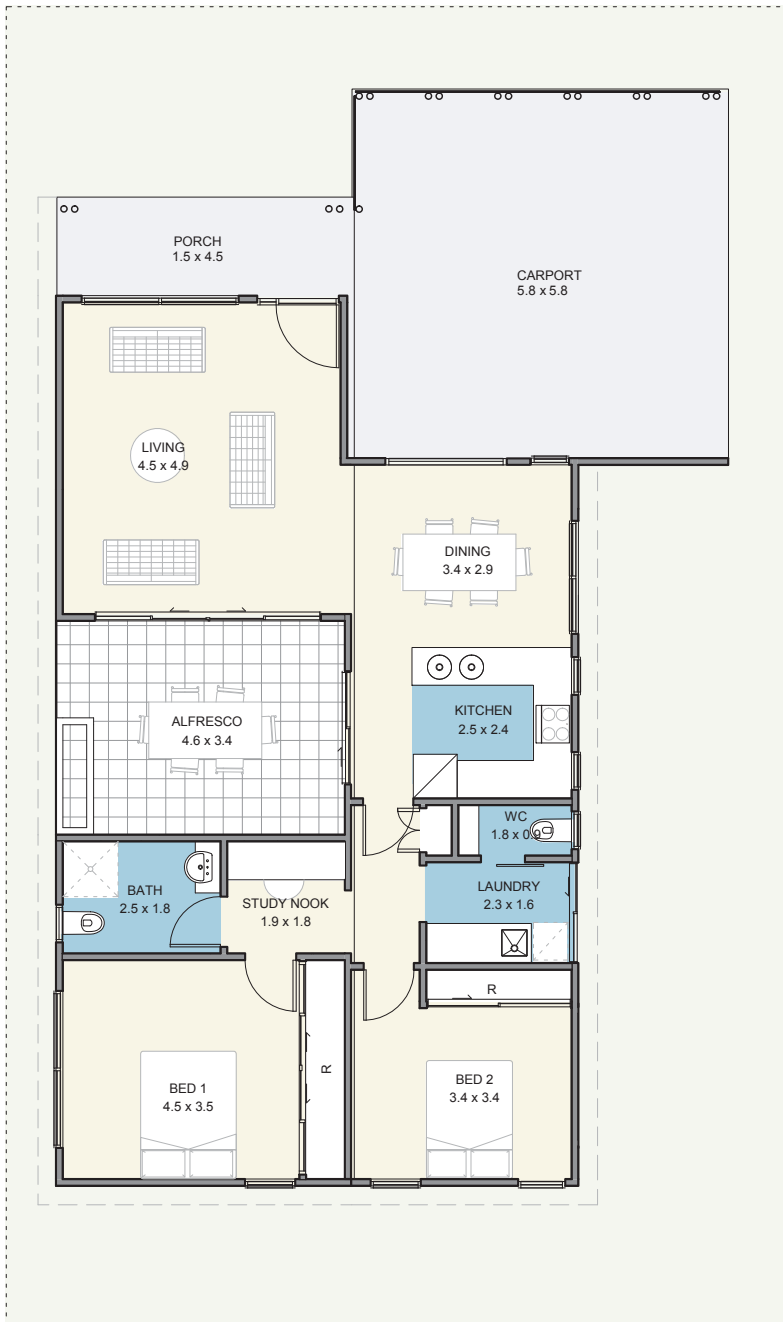


A place to call home

A compact but functional home, with two bedrooms and a walk through study. The living, kitchen and dining lead out to the alfresco area creating a large open plan living space.

The carport can house two cars and there is a separate large storage area. All the external walls and roof are insulated for protection from the heat and cold.

The Sandpiper

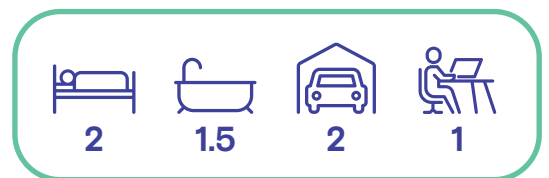


Specifications

House	92m ²
Alfresco	15m ²
Carport	34m ²
Porch	7m ²

Features

- Reverse cycle air conditioning;
- Built in robes to all bedrooms;
- Natural gas hotplate and fan forced electric oven;
- Carpet to all bedrooms;
- Vinyl planking to living areas;
- Flyscreens to all windows;
- Blinds to all windows;
- LED lighting throughout;
- Tiled splashback to the kitchen;
- Soft-close drawers throughout;
- Stone benchtops;
- Waterwise, fully landscaped and maintained front garden;
- Alfresco entertaining area;
- Foldaway clothes line; and
- Full insulation throughout.



Updated 23rd August 2022

Disclaimer: Edenlife reserves the right to change the information in this publication at any time without notice.

For further information:

T: 08 9423 5131

E: live@edenlife.com.au

edenlife.com.au



 **EDENLIFE**[®]
AUSTRALIND