

# The Harrier



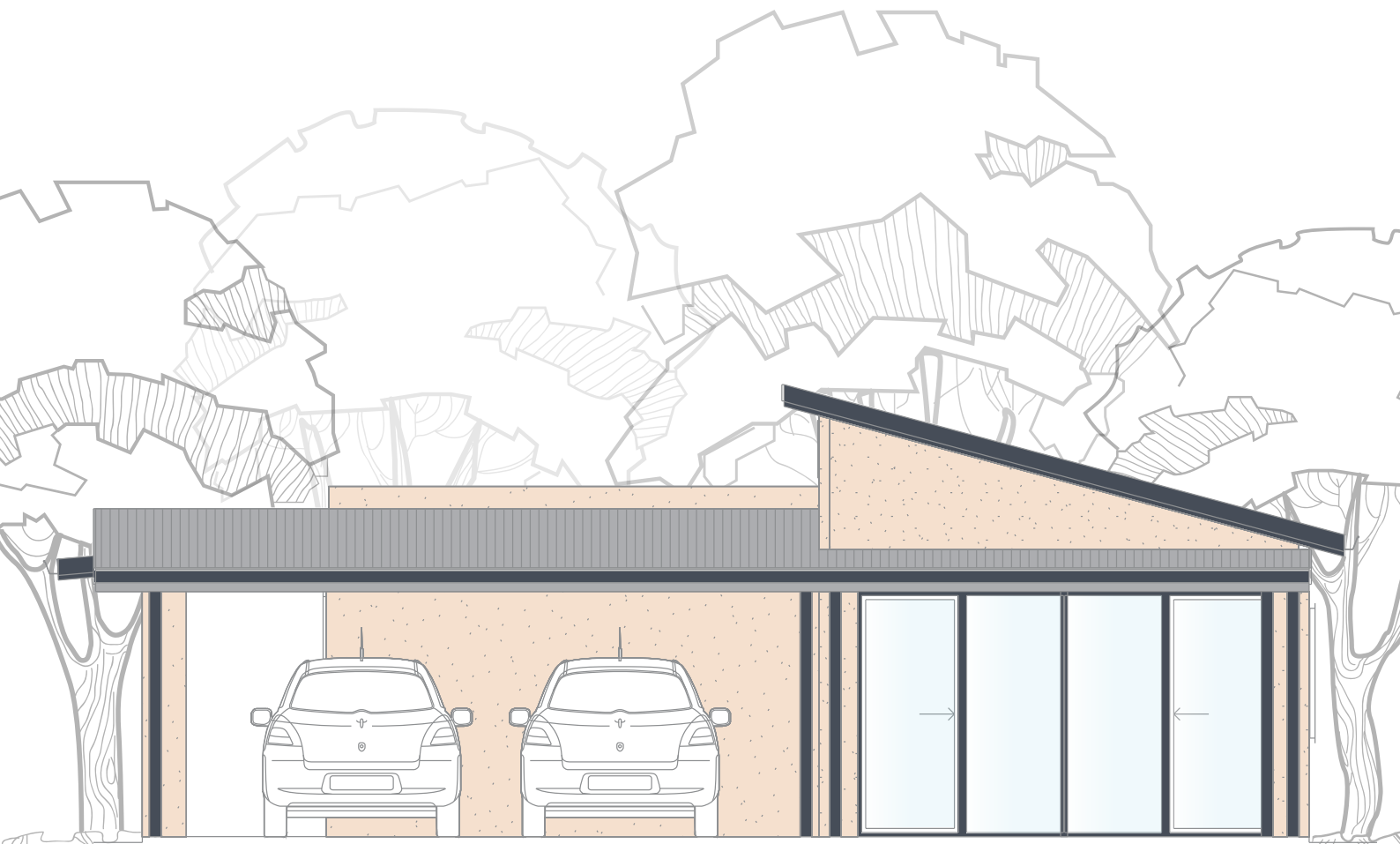
2



1.5



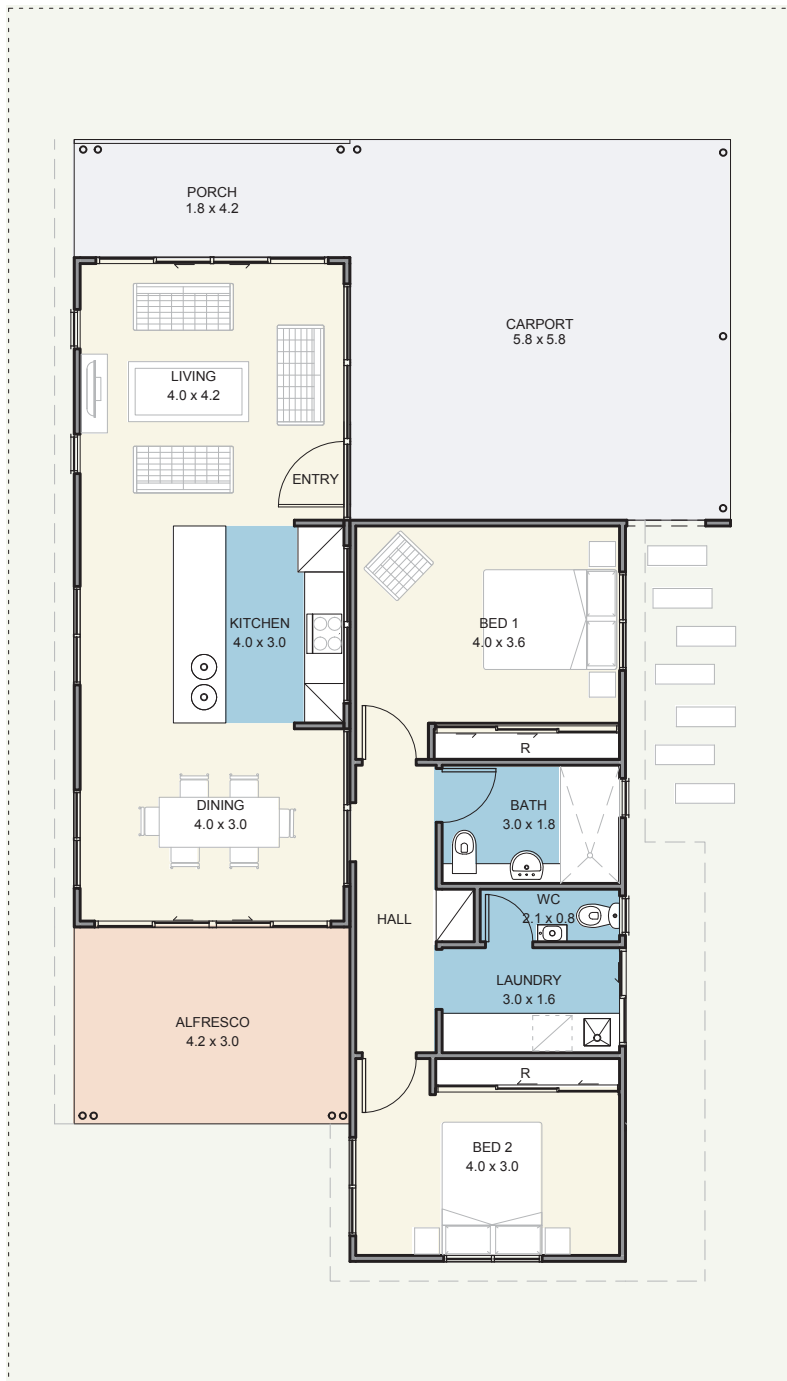
2



## A place to call home

Whilst The Harrier is somewhat compact, it has 2 spacious bedrooms featuring built in robes and 1.5 bathrooms. The kitchen, featuring splash back tiles with soft close drawers and LED lighting is against a spacious living and dining area creating a homely entertaining area, as it also flows onto the alfresco.

# The Harrier



## Specifications

House.....	90m <sup>2</sup>
Alfresco .....	13m <sup>2</sup>
Carport .....	34m <sup>2</sup>
Porch .....	8m <sup>2</sup>

## Features

- Reverse cycle air conditioning;
- Built in robes to all bedrooms;
- Natural gas hotplate and fan forced electric oven;
- Carpet to all bedrooms;
- Vinyl planking to living areas;
- Flyscreens to all windows;
- Blinds to all windows;
- LED lighting throughout;
- Tiled splashback to the kitchen;
- Soft-close drawers throughout;
- Stone benchtops;
- Waterwise, fully landscaped and maintained front garden;
- Alfresco entertaining area;
- Foldaway clothes line; and
- Full insulation throughout.



Updated 23<sup>rd</sup> August 2022

Disclaimer: Edenlife reserves the right to change the information in this publication at any time without notice.

For further information:

T: 08 9423 5131

E: [live@edenlife.com.au](mailto:live@edenlife.com.au)

[edenlife.com.au](http://edenlife.com.au)



 **EDENLIFE**<sup>®</sup>  
AUSTRALIND