

# The Cormorant



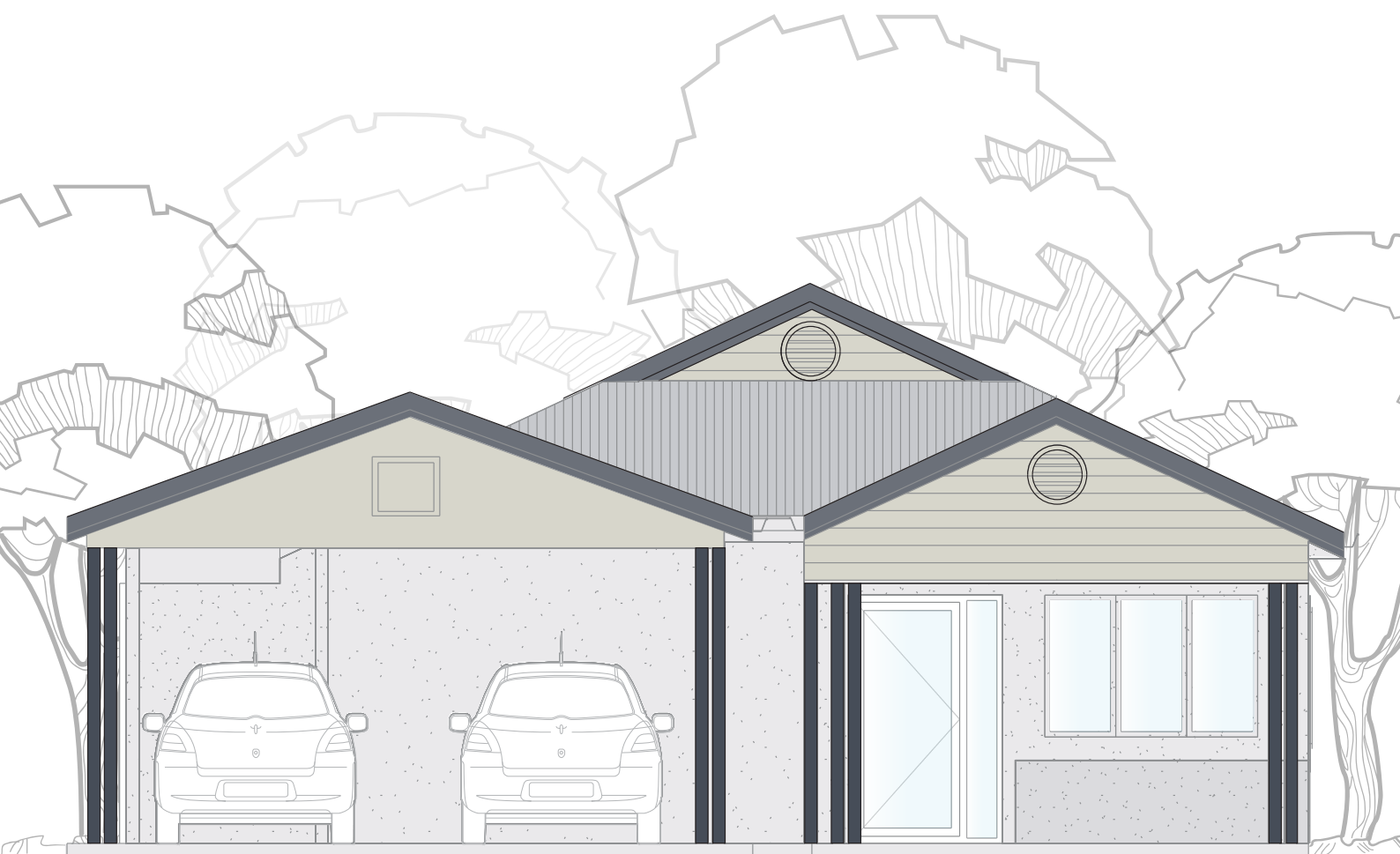
2



2



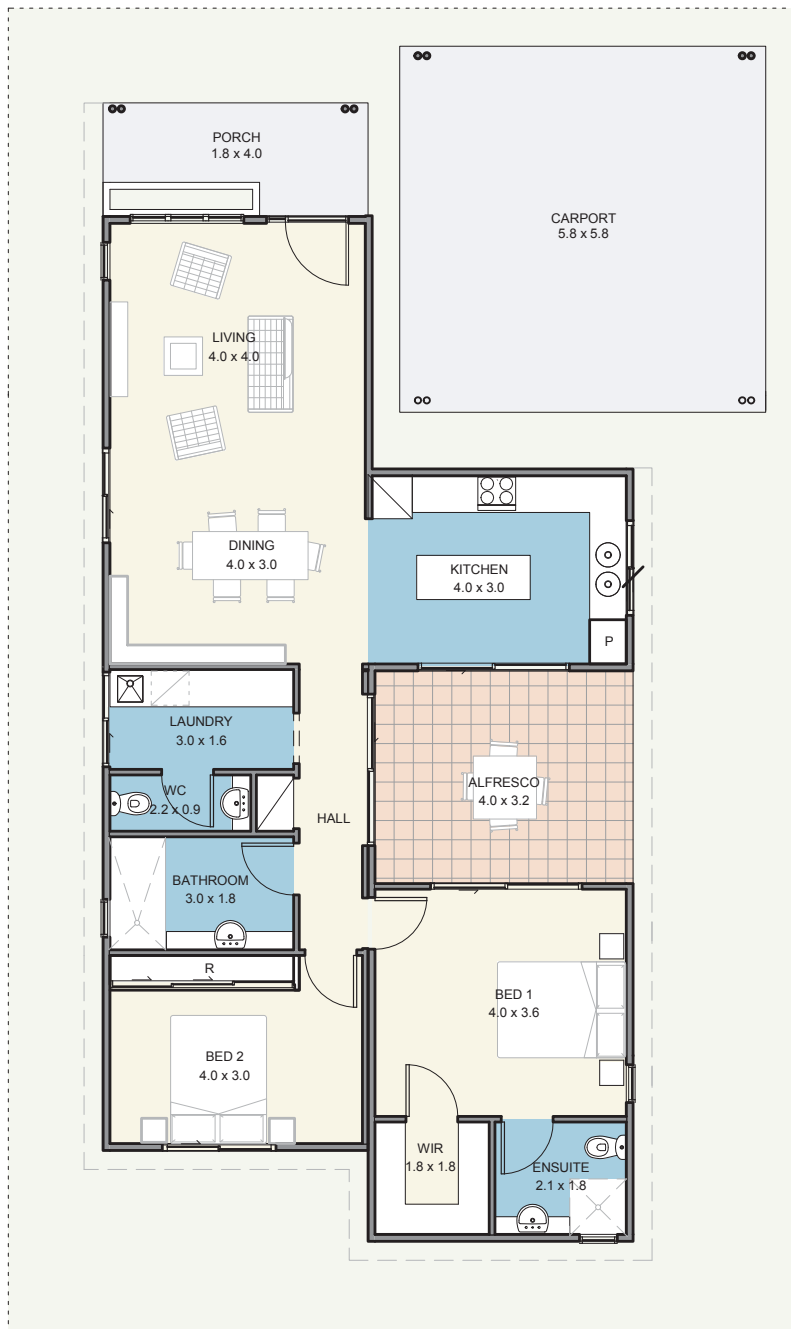
2



## A place to **call home**

With two bedrooms, one including a walk in wardrobe and the other a built in robe, and two full bathrooms, The Cormorant has a comfortably spread layout. The central alfresco area linking to the tiled splash back kitchen, dining and living area creates a modern entertaining area.

# The Cormorant

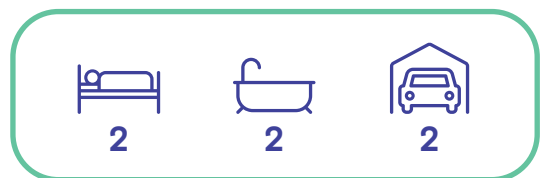


## Specifications

House .....	101m <sup>2</sup>
Alfresco .....	13m <sup>2</sup>
Carport .....	34m <sup>2</sup>
Porch .....	7m <sup>2</sup>

## Features

- Reverse cycle air conditioning;
- Built in robes to all bedrooms;
- Natural gas hotplate and fan forced electric oven;
- Carpet to all bedrooms;
- Vinyl planking to living areas;
- Flyscreens to all windows;
- Blinds to all windows;
- LED lighting throughout;
- Tiled splashback to the kitchen;
- Soft-close drawers throughout;
- Stone benchtops;
- Waterwise, fully landscaped and maintained front garden;
- Alfresco entertaining area;
- Foldaway clothes line; and
- Full insulation throughout.



Updated 23<sup>rd</sup> August 2022

Disclaimer: Edenlife reserves the right to change the information in this publication at any time without notice.

For further information:

T: 08 9423 5131

E: [live@edenlife.com.au](mailto:live@edenlife.com.au)

[edenlife.com.au](http://edenlife.com.au)



 EDENLIFE<sup>®</sup>  
AUSTRALIND