

The Wren



3



2



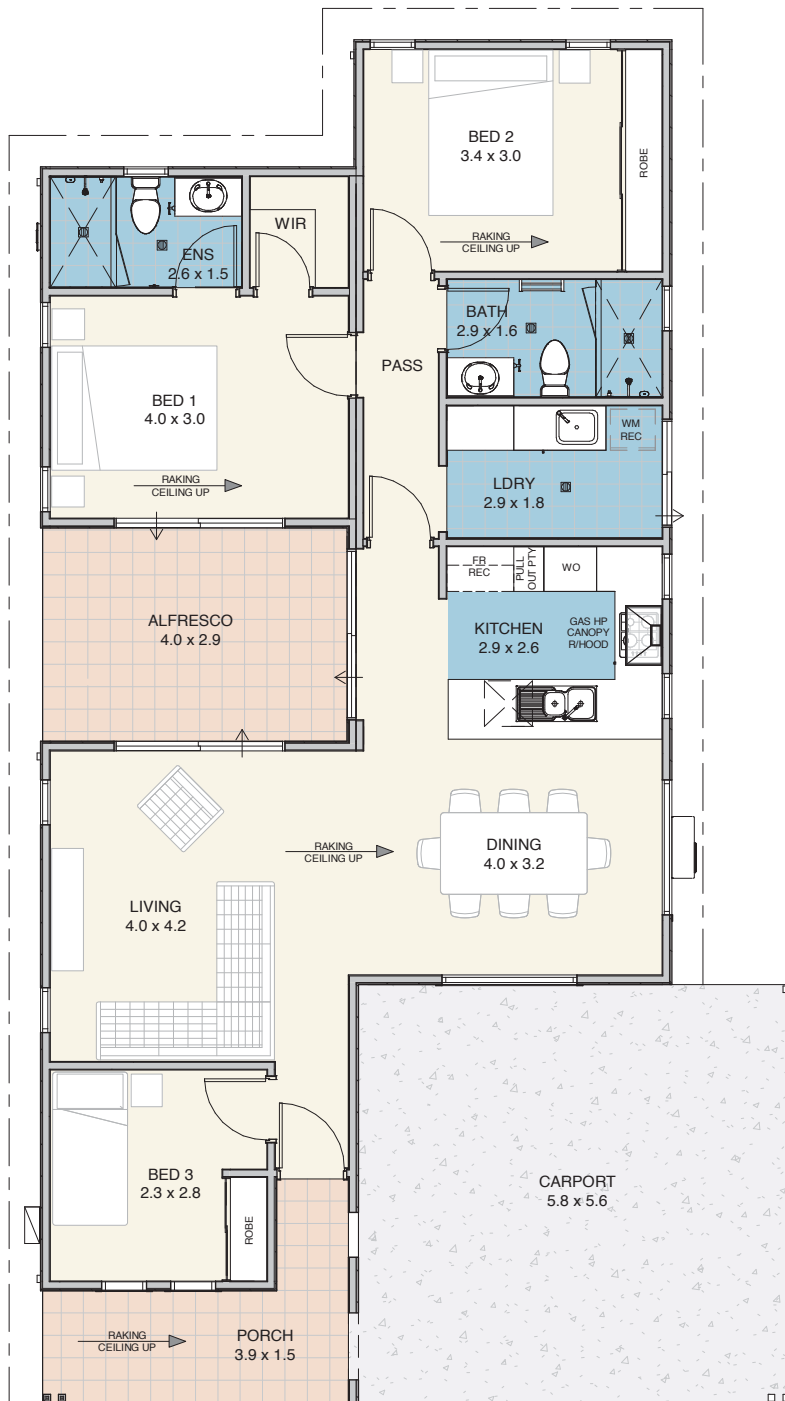
2



A place to call home

A thoughtfully planned home with direct access to the alfresco from the living room, kitchen and bedroom 1 allowing a seamless integration between indoor and outdoor living. Bedrooms 2 & 3 are located at opposite ends of the home, providing private space between all. This home comes with a double carport and a waterwise, landscaped and maintained front garden.

The Wren



Specifications

House	104m ²
Alfresco	12m ²
Carport	32m ²
Porch	8m ²

Features

- Reverse cycle air conditioning;
- Built in robes to all bedrooms;
- Natural gas hotplate and fan forced electric oven;
- Carpet to all bedrooms;
- Vinyl planking to living areas;
- Flyscreens to all windows;
- Blinds to all windows;
- LED lighting throughout;
- Tiled splashback to the kitchen;
- Soft-close drawers throughout;
- Stone benchtops;
- Waterwise, fully landscaped and maintained front garden;
- Alfresco entertaining area;
- Foldaway clothes line; and
- Full insulation throughout.



Updated 30th June 2022

Disclaimer: Edenlife reserves the right to change the information in this publication at any time without notice.

For further information:

T: 08 9423 5131

E: live@edenlife.com.au

edenlife.com.au



 EDENLIFE[®]
AUSTRALIND