

The Kingfisher



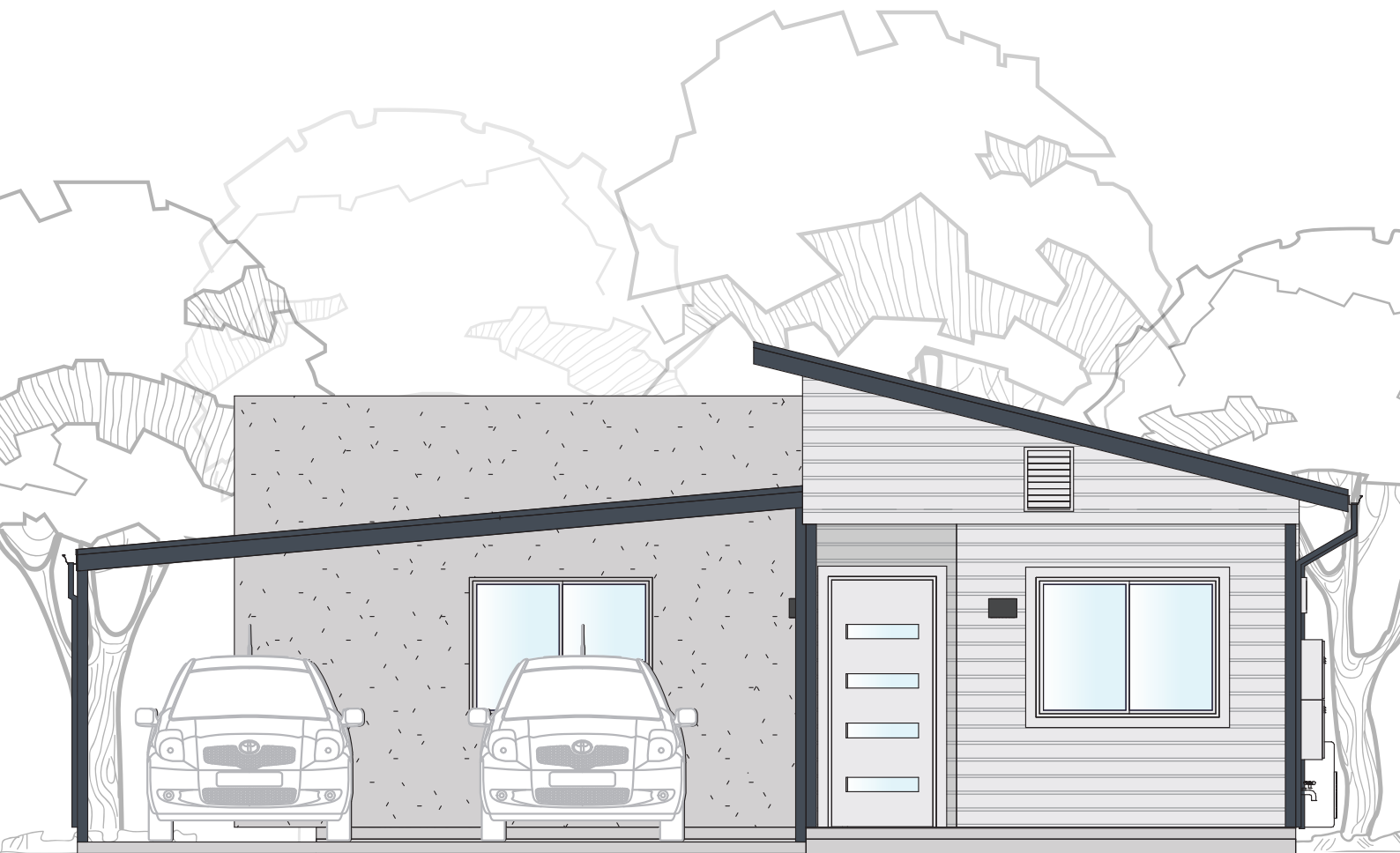
3



2



2

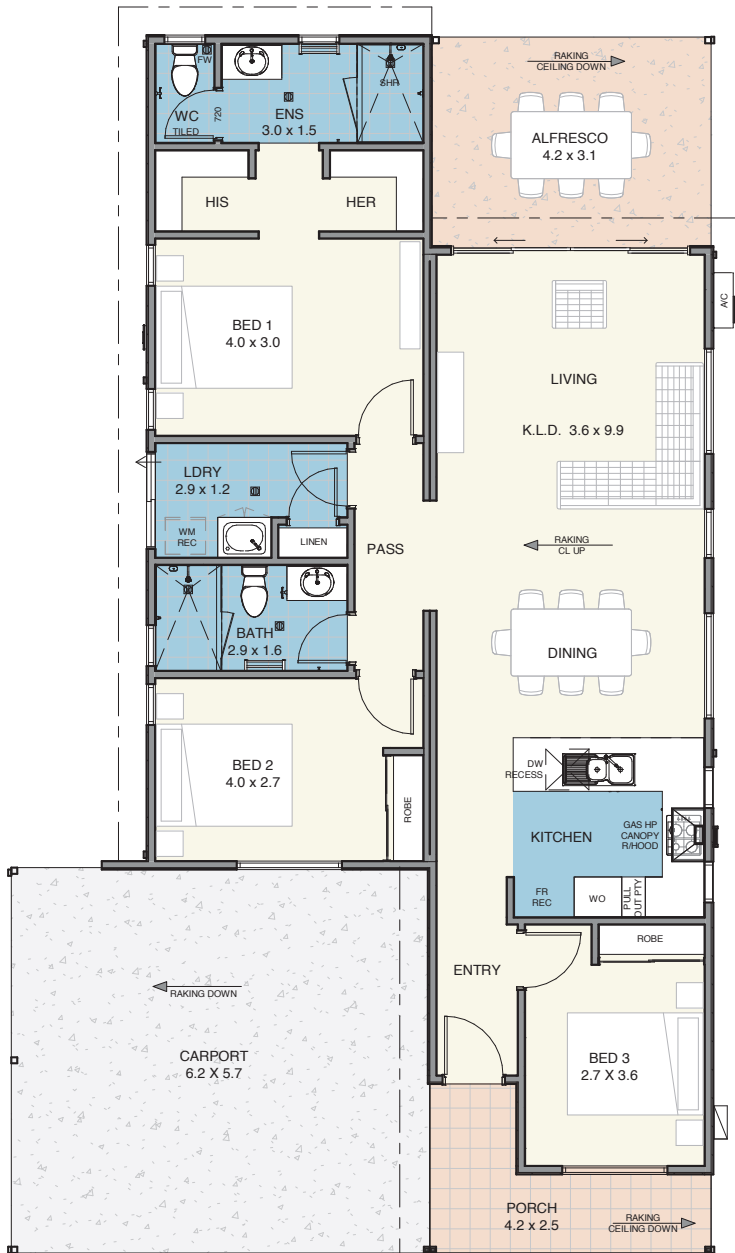


A place to call home

The Kingfisher is the most luxurious of the Edenlife homes with 3 bedrooms and 2 bathrooms spaced throughout the home and a large open plan living space. Entering through the front verandah, the layout then leads onto the kitchen, dining and living area which flows beautifully onto the alfresco outdoor area.



The Kingfisher

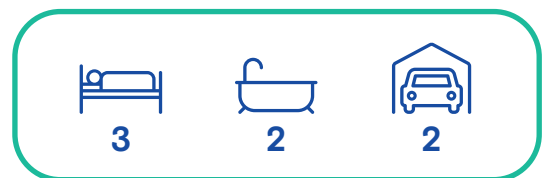


Specifications

House	109m ²
Alfresco	13m ²
Carport	36m ²
Porch	7m ²

Features

- Reverse cycle air conditioning;
- Built in robes to all bedrooms;
- Natural gas hotplate and fan forced electric oven;
- Carpet to all bedrooms;
- Vinyl planking to living areas;
- Flyscreens to all windows;
- Blinds to all windows;
- LED lighting throughout;
- Tiled splashback to the kitchen;
- Soft-close drawers throughout;
- Stone benchtops;
- Waterwise, fully landscaped and maintained front garden;
- Alfresco entertaining area;
- Foldaway clothes line; and
- Full insulation throughout.



Updated 30th June 2022

Disclaimer: Edenlife reserves the right to change the information in this publication at any time without notice.

For further information:

T: 08 9423 5131

E: live@edenlife.com.au

edenlife.com.au



EDENLIFE
AUSTRALIND